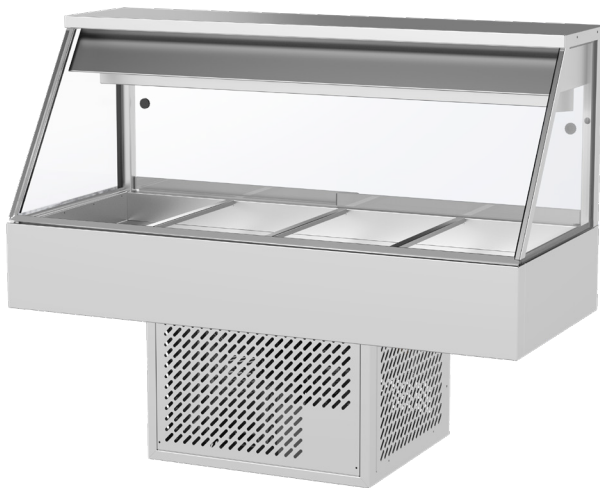


## Cold Food Displays - Straight Glass WR.CFSxx



### Product Information:

- Exceptional value for money cold food display in a traditional straight profile
- Double glazed toughened glass front and sides for improved performance and efficiency
- Refrigerated by a 90mm deep cold plate well with cross fin coil over
- Adjustable digital controller designed to hold temperature accurately between 2°C and 5°C
- Rear toughened glass roller doors as standard
- Top mounted LED light for illuminated interior
- Insulated tank with double skin stainless steel construction
- Undermount refrigeration unit supplied with drain hose for connection to waste
- Designed to operate at ambient temperatures up to 32°C
- Takes gastronorm pans up to 65mm deep (sold separately)
- Other pan sizes and combinations available
- Available in a range of sizes from 3-6 modules
- Available in a variety of profiles, with matching hot food displays
- Wide range of functional accessories available

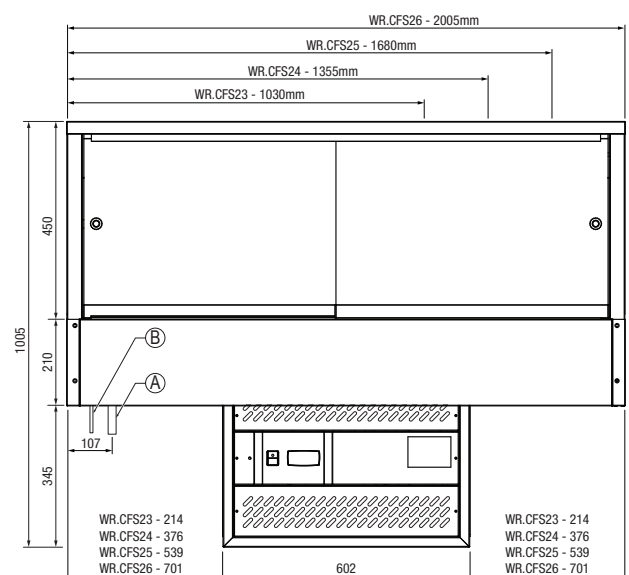
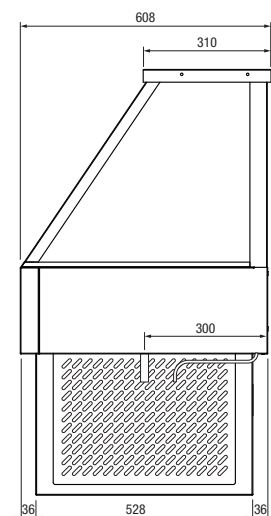
### Note:

- All Woodson units are designed for use with Woodson pans. Other suppliers pans may fit, however this is not guaranteed.
- Cabinets require ventilation for built in cold displays
- Optional trolley and panels sold separately

### Specifications

Model	WR.CFS23	WR.CFS24
Height	690mm	690mm
Width	1030mm	1355mm
Depth	600mm	600mm
Power	0.6kW (10A plug & lead fitted)	0.72kW (10A plug & lead fitted)
Gas	R134a	R134a

Model	WR.CFS25	WR.CFS26
Height	690mm	690mm
Width	1680mm	2005mm
Depth	600mm	600mm
Power	0.84kW (10A plug & lead fitted)	0.84kW (10A plug & lead fitted)
Gas	R134a	R134a



Due to continuous product research and development, the information contained herein is subject to change without notice.

Revision: A - 07/06/2022 - 03

[www.stoddart.com.au](http://www.stoddart.com.au)

[www.stoddart.co.nz](http://www.stoddart.co.nz)