



ES50DP

Heavy Duty Pass-Through Recirculating Warewasher



The Eswood ES50DP warewasher is Australian made, designed and built to last in harsh conditions. Its compact form excels in commercial kitchens, offering continuous performance. Independent upper and lower spray arms ensure thorough cleaning, while digital temperature displays ease monitoring. Standard drain pump, detergent and rinse aid pumps streamline the process. The ES50DP is a reliable and efficient solution for safe food handling and maintaining a hygienic workspace.

ES50DP standard features and benefits

- Counter-balanced lift-up hood with ergonomically designed wrap around handle
- Durable stainless-steel body construction and wash arms
- Automatic fill to wash and rinse tanks
- Digital wash & rinse temperature controllers & displays
- 1000-Watt wash pump
- 3 Wash programs to match degree of soil
- Detergent and rinse aid pump as standard
- Suitable for corner or inline installation
- Easily removable spray arms and filters
- 7200-Watt rinse water temperature booster
- Operation interlocked to rinse temperature
- Drain pump fitted as standard
- Machine starts upon closure of hood

Standard accessories

- 2 x plate rack
- 1 x cup rack
- 1 x cutlery container



Please note, due to ongoing product development and improvement, we reserve the right to change product design and specification at any time without notice.



1800 013 123 | +61 2 9604 7333
sales@middleby.com.au
middleby.com.au

VIC - TAS - 47 Stubbs Street, Kensington VIC 3031
QLD - U12, 210 Queensport Rd Nth, Murarrie QLD 4172
WA - U2, 9 Meares Way, Canning Vale WA 6155

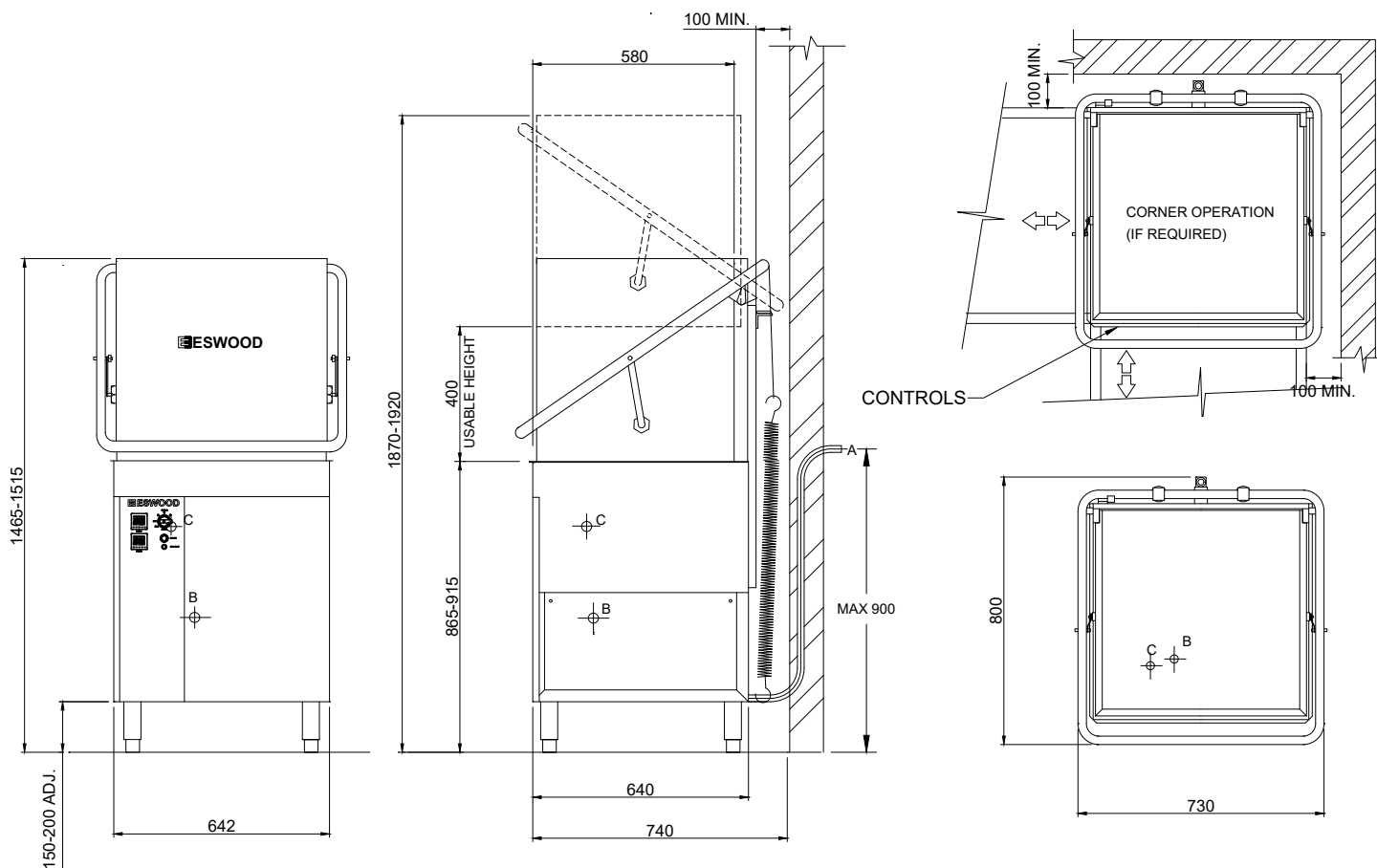
**HEAD OFFICE
AND MANUFACTURING PLANT**
211-217 Woodpark Road, Smithfield NSW 2164

vl_2025



ES50DP Heavy Duty Pass-Through Recirculating Warewasher

- A. Drain connection Ø22mm x 1.8m drain hose
 B. Hot water supply inlet 1/2" BSPF (15-58 psi / 100-400 kPa) 65°C
 C. Electrical connection 415V/50Hz/3Ph+N+E



ES50DP SPECIFICATIONS

DIMENSIONS (WxDxH)	645 x 645 x 1490 mm
HEIGHT WITH DOOR OPEN	1895 mm
RACK SIZE (WxD)	500 x 500 mm
ELECTRICAL CONNECTION	415V/50Hz/3Ph+N+E
RATING	10.3 kW / 14.2 Amps
WATER CONNECTION	1/2" BSPF (15-58 psi / 100-400 kPa) 65°C
DRAIN CONNECTION	Ø22mm
MEAL SERVICE	120 - 200 pax (50 racks/hr)

WASH CYCLE	60, 90 and 120 sec
WASH AND RINSE PUMP	Fitted
DETERGENT AND RINSE AID PUMP	Fitted
DRAIN PUMP	Fitted
WATER CONSUMPTION	4L/cycle
TANK CAPACITY	45L
WEIGHT	112 kg
PACKED	0.6 m ³



PE-388-GE-09

Please note, due to ongoing product development and improvement, we reserve the right to change product design and specification at any time without notice.



1800 013 123 | +61 2 9604 7333
 sales@middleby.com.au
 middleby.com.au

VIC - TAS - 47 Stubbs Street, Kensington VIC 3031
QLD - U12, 210 Queensport Rd Nth, Murarrie QLD 4172
WA - U2, 9 Meares Way, Canning Vale WA 6155

HEAD OFFICE AND MANUFACTURING PLANT
 211-217 Woodpark Road, Smithfield NSW 2164

vl_2025